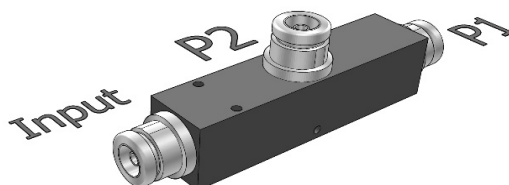


Power Tapper 6dB, 350-2700MHz,NF



Specifications

General Specification	
Application	Indoor/Outdoor
Color	Black
Inner Contact Plating	Silver
Interface	N female
Outer Contact Plating	Tri metal
Housing	Passivated Aluminum or powder paint
Dimensions	
Length*Width*Height	140.4 mm * 43 mm * 25 mm
Weights	
Weight, net	
Electrical Specification	
PIM, Passive IM	-153 dBc, 2x43 dBm
Power Rating, Max	200 W avg.
Impedance, nominal	50 ohm
Frequency Range	350-960 MHz / 1710-2700 MHz
Coupling	6 dB
Variation	± 1.2 dB @ 350-960 MHz
	± 0.8 dB @ 1710-2700 MHz
VSWR, Max	1.30 @ 350-960 MHz
	1.25 @ 1710-2700 MHz
DC Capability	DC transmission only between input and port P1
	P2 is coupled capacitive

ALL SPECIFICATIONS ARE SUBJECT TO CHANGE WITHOUT NOTICE.

T6-035270-NF

Eternal-HJY

Power Tapper 6dB, 350-2700MHz,NF

Environmental Specification

Temperature Range	-35 °C to +85 °C
Ingress Protection Test Method	IP65
Regulatory Compliance	
ROHS	Compliant

ALL SPECIFICATIONS ARE SUBJECT TO CHANGE WITHOUT NOTICE.