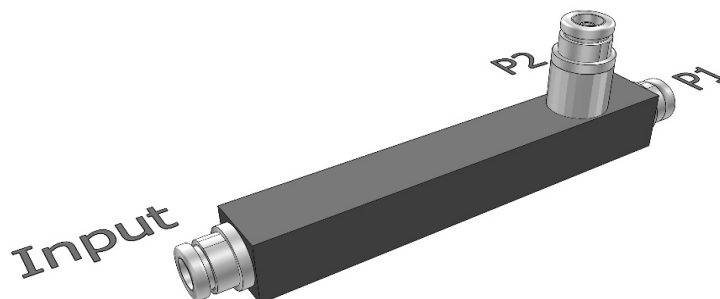


Power Tapper 10dB, 700-2700MHz,NF



Specifications

General Specification	
Application	Indoor/Outdoor
Color	Black
Inner Contact Plating	Silver
Interface	N female
Outer Contact Plating	Tri metal
Housing	Passivated Aluminum or powder paint
Dimensions	
Length*Width*Height	209 mm * 62.6 mm * 25 mm
Weights	
Weight, net	0.37 kg
Electrical Specification	
PIM, Passive IM	-150 dBc, 2x43 dBm
Power Rating, Max	200 W avg.
Impedance, nominal	50 ohm
Frequency Range	700-2700 MHz
Tap Loss, Input←→P2	-10 ± 1.0 dB @ 800-2500 MHz
	-10 ± 1.2 dB @ 700-2700 MHz
Tap Loss, Input←→P1, Typical	-0.5
VSWR, Max	1.35
DC Capability	DC transmission only between input and port P1
	P2 is coupled capacitive

T10-070270-NF

Eternal-HJY

Power Tapper 10dB, 700-2700MHz,NF

Environmental Specification

Temperature Range	-25 °C to +75 °C
Ingress Protection Test Method	IP65
Regulatory Compliance	
ROHS	Compliant

ALL SPECIFICATIONS ARE SUBJECT TO CHANGE WITHOUT NOTICE.