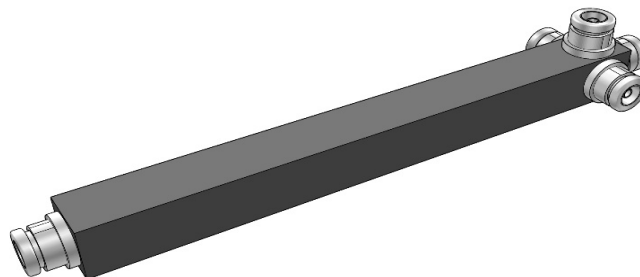


**S4-038270-NF**

**Eternal-HJY**

4 Way High Powe Splitter,380-2700MHz,NF



## Specifications

General Specification	
<b>Application</b>	Indoor/Outdoor
<b>Color</b>	Black
<b>Inner Contact Plating</b>	Silver
<b>Interface</b>	N female
<b>Outer Contact Plating</b>	Tri metal
<b>Housing</b>	Passivated Aluminum or powder paint
<b>Mounting</b>	Bracket for wall mounting included in the scope of supply
Dimensions	
<b>Length*Width*Height</b>	294 mm * 61 mm * 25 mm
Weights	
<b>Weight, net</b>	0.59 kg
Electrical Specification	
<b>PIM, Passive IM</b>	-150 dBc, 2x43 dBm
<b>Power Rating, Max</b>	300 W; 3 KW Peak
<b>Input Impedance</b>	50 ohm
<b>Frequency Range</b>	380-2700 MHz
<b>VSWR, Max</b>	1.35
<b>Split</b>	4
<b>Dissipative Loss</b>	0.5 dB
<b>Split Loss</b>	6 dB
<b>DC Capability</b>	DC transmission between all ports

**ALL SPECIFICATIONS ARE SUBJECT TO CHANGE WITHOUT NOTICE.**

---

4 Way High Powe Splitter,380-2700MHz,NF

Environmental Specification

<b>Temperature Range</b>	-35 °C to +75 °C
<b>Ingress Protection Test Method</b>	IP65
Regulatory Compliance	
<b>ROHS</b>	Compliant