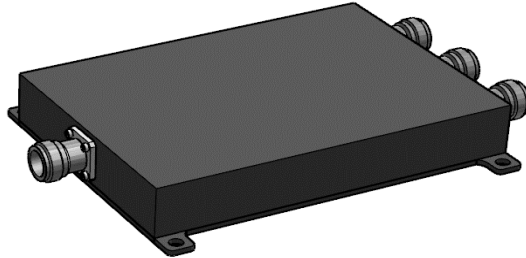


## 3 Way Low Power Splitter,300-960MHz,NF



### Specifications

General Specification	
Application	Indoor/Outdoor
Color	Black
Inner Contact Plating	Silver
Interface	N female
Outer Contact Plating	Tri metal
Housing	Passivated Aluminum or powder paint
Dimensions	
Length*Width*Height	175 mm * 117 mm * 22 mm
Weights	
Weight, net	0.62 kg
Electrical Specification	
Power Rating, Max	50 W
Impedance	50 ohm
Frequency Range	300-960 MHz
Isolation, Min	20 dB
VSWR, Max	1.35
Split	3
Insertion Loss, Max	0.5 dB
Split Loss	4.8 dB
Reflected Power, Max	9 Watts
DC capability	DC transmission between all ports

3 Way Low Power Splitter,300-960MHz,NF

Environmental Specification

Temperature Range	-25 °C to +75 °C
Ingress Protection Test Method	IP65
Regulatory Compliance	
ROHS	Compliant