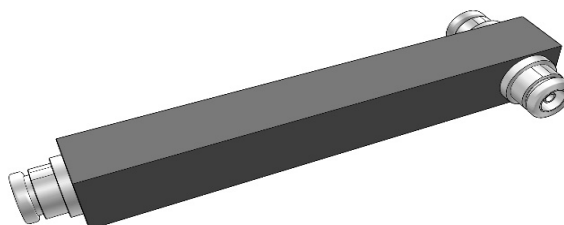


2 Way High Power Splitter,300-960MHz,NF**Specifications**

General Specification	
Application	Indoor/Outdoor
Color	Black
Inner Contact Plating	Silver
Interface	N female
Outer Contact Plating	Tri metal
Housing	Passivated Aluminum or powder paint
Mounting	Bracket for wall mounting included in the scope of supply
Dimensions	
Length*Width*Height	206 mm * 61 mm * 25 mm
Weights	
Weight, net	0.38 kg
Electrical Specification	
PIM, Passive IM	-150 dBc, 2x43 dBm
Power Rating, Max	300 W; 1.5 KW Peak
Input Impedance	50 ohm
Frequency Range	300-960 MHz
VSWR, Max	1.35
Split	2
Insertion Loss, Max	0.1 dB
Split Loss	3 dB
DC capability	DC transmission between all ports

ALL SPECIFICATIONS ARE SUBJECT TO CHANGE WITHOUT NOTICE.

2 Way High Power Splitter,300-960MHz,NF

Environmental Specification

Temperature Range	-35 °C to +75 °C
Ingress Protection Test Method	IP65
Regulatory Compliance	
ROHS	Compliant